

TOPPONCINO - Instructions for Sewing

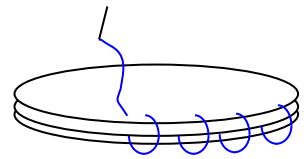
Materials:

- ✚ 2-4 layers of cotton batting or thick toweling or alternate layers with stiff cotton
- ✚ 150 cm strong, unbleached cotton fabric - lining
- ✚ 150 cm thin cotton fabric (muslin) - sham

The finished size of the topponcino is about 65 x 40 cm/26 x 16 in.

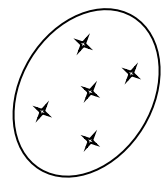
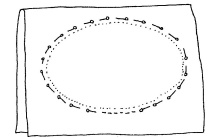
Preparing the batting:

- ✚ Place 2-4 layers of cotton batting or toweling on top of each other
- ✚ (# depending on thickness of material used) or alternate batting with
- ✚ stiff cotton.
- ✚ Lay the pattern on top of the cotton batting, pin in place and cut
- ✚ Whip stitch around the edge



Preparing the lining:

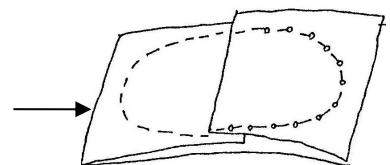
- ✚ Place pattern on two thickness' of heavy cotton material
- ✚ Hand-baste or pin *around the edge* of pattern through both pieces of material
- ✚ Cut out around the basting, adding 1 cm5/8 in. for seam
- ✚ Zigzag or whipstitch each piece of material to prevent raveling if necessary
- ✚ Sew the 2 pieces together on the basted stitches, leaving an opening about 35 cm/14 in wide on one straight side.
- ✚ Remove the basting threads and turn right side out
- ✚ Insert the cotton batting mattress
- ✚ Whipstitch the opening, closing securely
- ✚ Tack through in 5 places. Small bows may be used.



For sham:

The back will overlap so

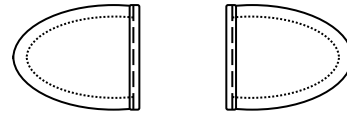
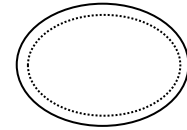
- ✚ *Either* fold material long enough to have an uninterrupted front and a back that overlaps by approximately 12 cm/5 in. including seam allowance,



✚ Or cut one front including a seam allowance and two back pieces, each ½ the front PLUS an extra 12 cm/5 in. including seam allowance.

✚ Sew a neat hem on the straight edge of each back piece, rolling the material twice - 1 cm x 2 or ½ in x 2.

✚ If desired, cut a piece of lace that will begin at the top curve to the top curve.



go from the end of

Now all 3 pieces of the sham can be put together:

1. Lay the front piece of the sham **right side up** on a table
2. Lay the lace carefully along the top pinning or basting along the sewing line
3. Lay the *top back piece* over the lace **right side down** (the right sides are together) , carefully matching the sewing line
4. Lay the *bottom back piece* **right side down** on the front piece matching the sewing line - the extra material will overlap the top back piece. The two back pieces will overlap about 10 cm/4 in.
5. Sew and turn outside
6. Insert the covered batting, adjust the fit if necessary

The sham should fit snugly.

